



Ström Architects creates "monastic" Case House in Cheltenham



Jon Astbury | 1 July 2023 | 6 comments

Listen to this story: Ström Architects creates "monastic" Case House in Cheltenham



1x

- 02:58 ADAURIS

British studio [Ström Architects](#) has completed a [minimalist](#) home in Cheltenham, UK, which references modernist Case Study Houses in California.

Aptly named Case House, it is defined by pared-back finishes and forms, and layers of walls and gardens that buffer its light, airy interiors from the adjacent busy road.



Ström Architects has completed a minimalist home in Cheltenham

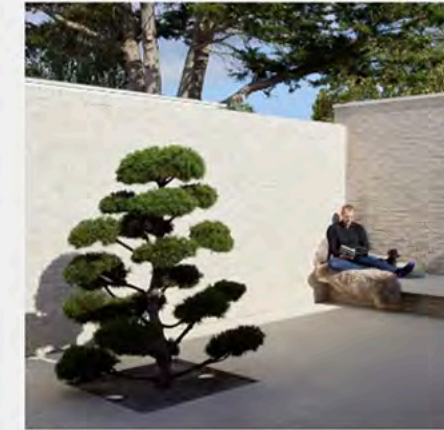
The client presented [Ström Architects](#) with a series of visual references for the project, which included the minimalist architecture of British architect [John Pawson](#) and sleek Case Study Houses – a series of experimental dwellings built between 1945 and 1966 in southern California.

In response, the studio created a deliberately simple and minimalist home that contrasts with its typically suburban setting.

Top architecture stories

Most popular

Most recent



1 Ström Architects creates "monastic" Case House in Cheltenham

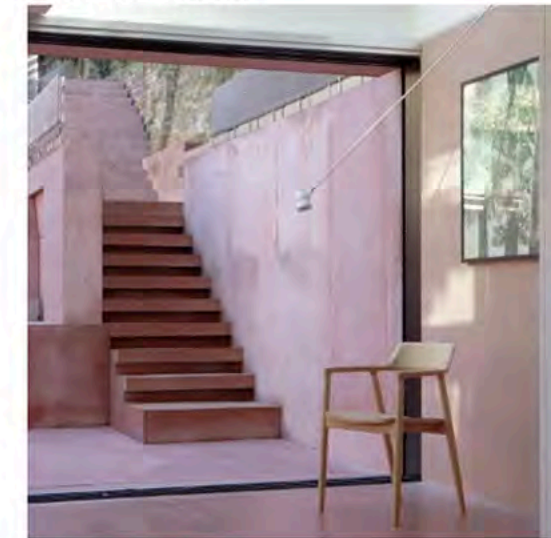
2 David Adjaye's first skyscraper "like a ruin" in New York

3 Balzar Arquitectos nestles La Casa de los Olivos into Valencian olive grove

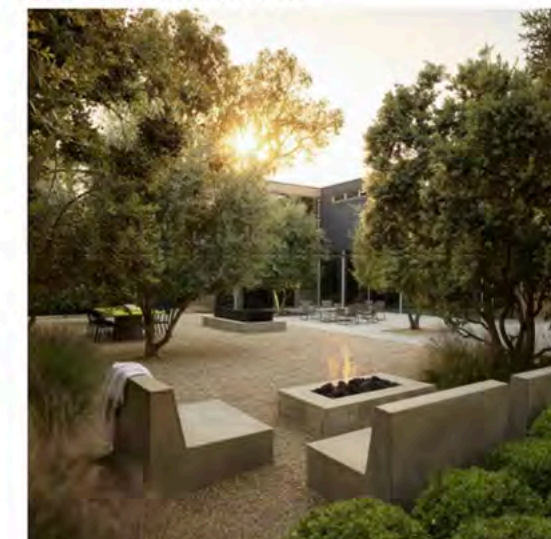
4 Researchers propose turning The Line into The Circle to improve mobility

5 Tim Fu uses AI to transform crumpled paper into starchitect buildings

Unknown Works brightens Victorian townhouse with dusty pink extension



Courtyard lies at heart of Santa Monica Modern house by Walker Warner Architects



Ström Architects has completed a minimalist home in Cheltenham

The client presented Ström Architects with a series of visual references for the project, which included the minimalist architecture of British architect John Pawson and sleek Case Study Houses – a series of experimental dwellings built between 1945 and 1966 in southern California.

In response, the studio created a deliberately simple and minimalist home that contrasts with its typically suburban setting.



It references modernist Case Study Houses in California

"[The clients] were struck by the idea of editing spaces to their essentials, and were interested in exploring how this process of architectural editing could then impact on the way they would inhabit the house – in a sense curating a way of living exemplified by the Case Study Houses," said Ström Architects founder Magnus Ström.

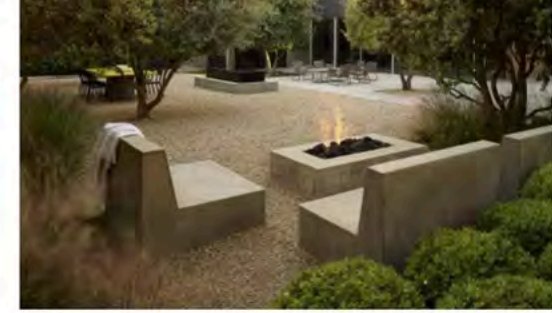
"There is also a pleasing contrast between the setting – just off a busy road in a town centre – with the almost monastic feel of the house," he told Dezeen.



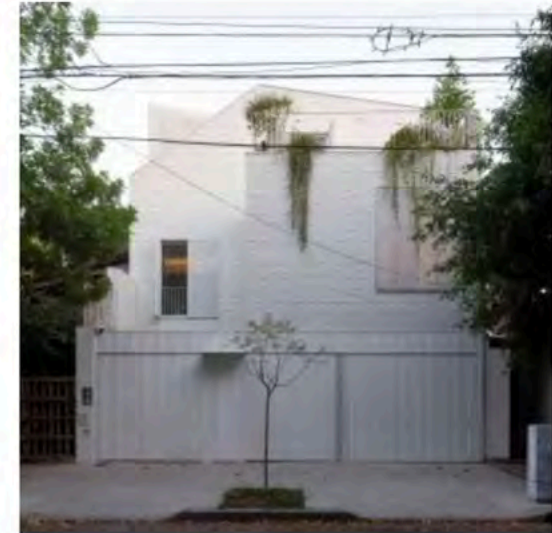
Walls and gardens buffer its interiors from an adjacent road

Located on a narrow rectilinear site, Case House is split into two blocks that are offset to create garden spaces to the east and west. A separate annexe and covered parking space are positioned at the rear.

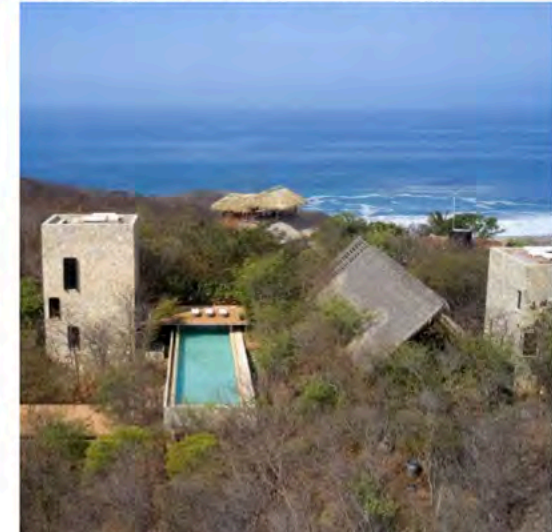
A slatted timber screen and narrow water pool create a barrier between the street and entrance, which leads directly into a study and a bedroom in the three-bedroom house.



BHY Arquitectos arranges multiple courtyards in white Argentinian house



Cometa House is nestled within trees on coastal site in Oaxaca



Subscribe

**Subscribe to
our newsletters**



Email

Next

Waechter Architecture places rain garden within Meadow House in Oregon



area, where large sliding glass doors open out onto a rear courtyard that wraps around the home's western edge.

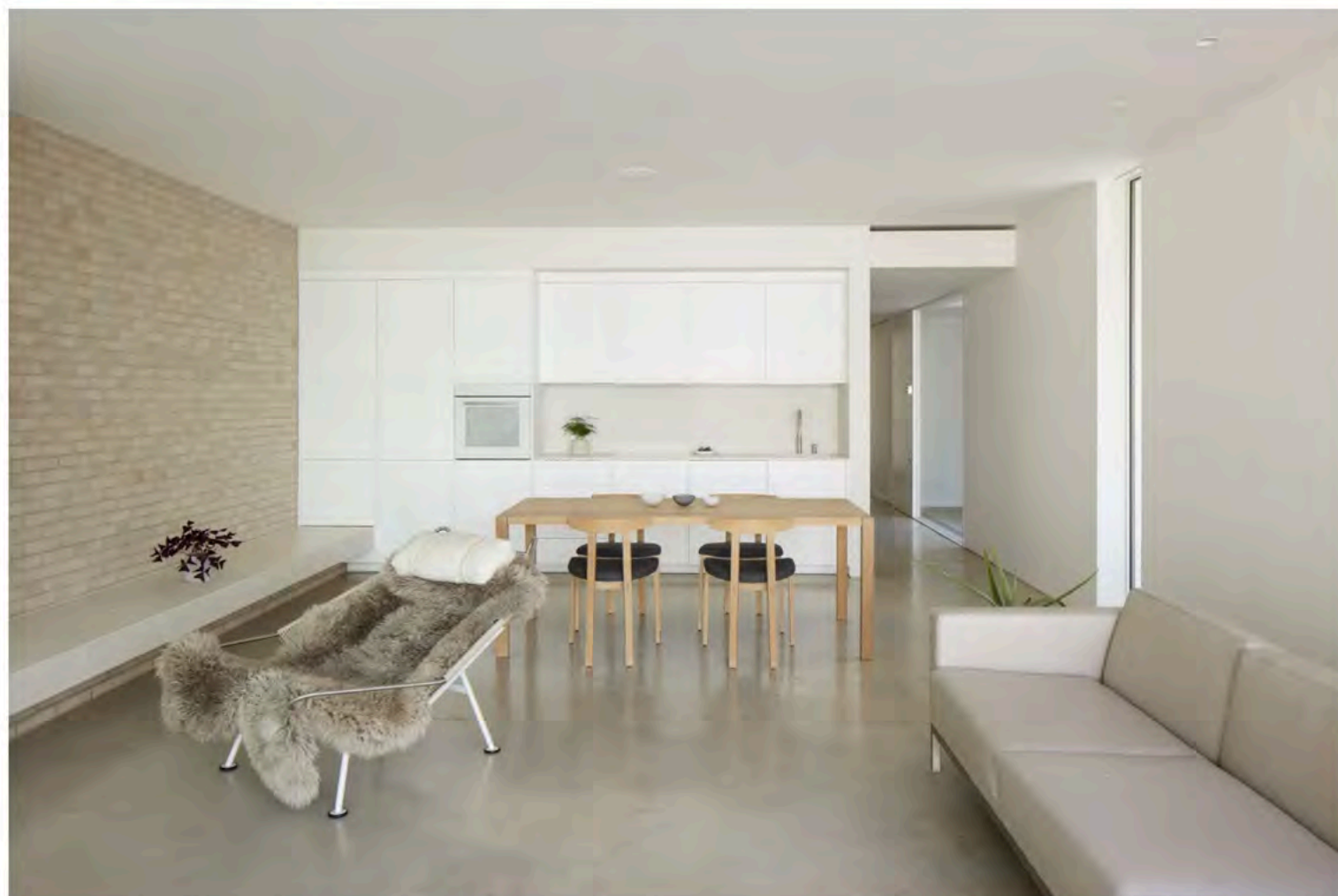
Paved pathways connect either end of the site and are sheltered by overhanging sections of Case House's large flat roof.



White walls define the interiors

Glossy concrete floors, white brickwork and white-painted carpentry define the stark interiors and are continued into the rear garden to create a sense of continuity between inside and outside.

"[The rear garden] is conceived as an outdoor room," said Ström. "We worked with the client to develop a minimalist garden space which shares the same material palette as the living room, resulting in a seamless flow from inside to outside."



Glossy concrete floors run throughout

Ström Architects was founded by Ström in 2010 and the studio's projects often take a highly minimalist approach to design.

Its previous projects include a modern extension to a traditional home in Surrey and a black-timber holiday home in the Isle of Wight.

The photography is by Richard Chivers.

Read more: [Architecture](#) | [Residential](#) | [UK](#) | [England](#) | [Houses](#) | [British houses](#) | [Ström Architects](#) | [Minimalist architecture](#)



Popular
jobs

Featured
jobs

AND OBJECTS

- 1 Furniture/product designer at And Objects
- 2 Junior/mid-level architect at Goettsch Partners
- 3 Project architect at Euroterra Capital
- 4 Project architect at Miller Bourne Architects
- 5 Architectural technologist/technician at Miller Bourne Architects



White walls define the interiors

Glossy concrete floors, white brickwork and white-painted carpentry define the stark interiors and are continued into the rear garden to create a sense of continuity between inside and outside.

"[The rear garden] is conceived as an outdoor room," said Ström. "We worked with the client to develop a minimalist garden space which shares the same material palette as the living room, resulting in a seamless flow from inside to outside."



Glossy concrete floors run throughout

Ström Architects was founded by Ström in 2010 and the studio's projects often take a highly minimalist approach to design.

Its previous projects include a modern extension to a traditional home in Surrey and a black-timber holiday home in the Isle of Wight.

The photography is by Richard Chivers.

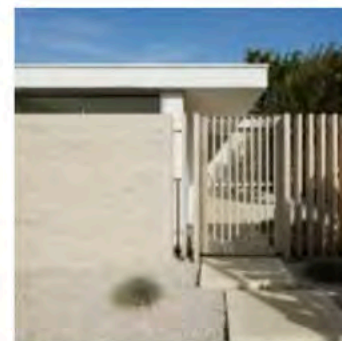
Read more: [Architecture](#) | [Residential](#) | [UK](#) | [England](#) | [Houses](#) | [British houses](#) | [Ström Architects](#) | [Minimalist architecture](#)

Subscribe to our newsletters

Email*

Next

More images and plans



Share and comment



6 comments

More [Architecture](#) [Interiors](#) [Design](#) [Lookbooks](#)

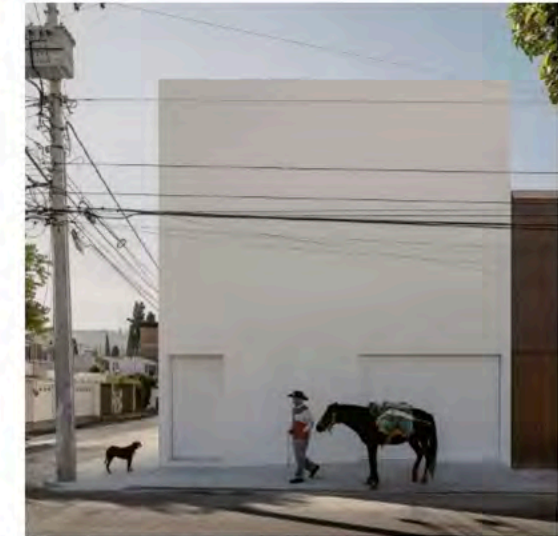
2 Junior/mid-level architect at Goettsch Partners

3 Project architect at Euroterra Capital

4 Project architect at Miller Bourne Architects

5 Architectural technologist/technician at Miller Bourne Architects

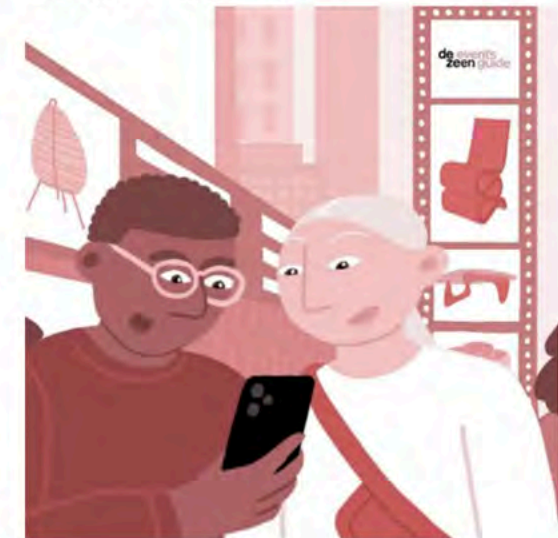
Dezeen's top five houses of June 2023



Eight welcoming wood-panelled dining rooms



Dezeen Events Guide



Dezeen Jobs

