

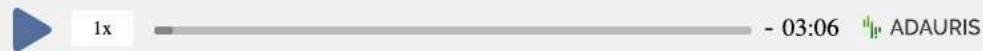


## Ström Architects adds contemporary extension to traditional English house



Amy Frearson | 20 February 2023 | 11 comments

Listen to this story: Ström Architects adds contemporary extension to traditional English



British practice **Ström Architects** has updated a period property in Surrey, England, with a large yet discrete extension built from fair-faced concrete and lime-washed brick.

The project, called *The Pines*, rationalised the floor plan of the traditional-style house and created modern facilities including a combined kitchen and dining room, a home office, and a gym and sauna.



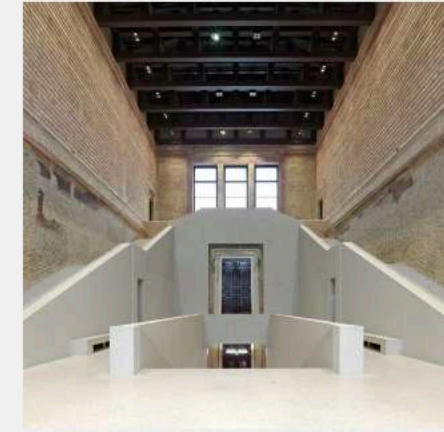
*The L-shaped extension frames a swimming pool*

Ström Architect's design provides these new spaces in a contemporary single-storey extension that is markedly different from the existing architecture but sits comfortably alongside it.

## Top architecture stories

Most popular

Most recent



1 Fifteen projects by Pritzker Architecture Prize-winner David Chipperfield

2 David Chipperfield wins 2023 Pritzker Architecture Prize

3 Auba Studio converts bakery in Spain into industrial NZ10 Apartment

4 Oversized roof shelters House in Quang Yen in Vietnam

5 Key architecture projects by late architect Rafael Viñoly

## Studio Andrew Trotter transforms 19th-century school into family home in Puglia



## Elizabeth Roberts combines two buildings into one for a Catskills ski house





"We did not want to detract from the overall scale and massing of the main house, which is substantial," explained architect Magnus Ström, founder of Ström Architects.



*The building is constructed from fair-faced concrete and lime-washed brick*

The clients are a couple with three grown-up children. Like Ström, they are originally from Sweden, which informed the choice of light-toned building materials.

The pale concrete and brick were designed to complement the existing palette of white-painted pebble dash, black-painted timbers and terracotta roof tiles.

"We wanted some difference," Ström told Dezeen. "The palette complements the existing, yet has a Scandinavian touch."



*A garage was relocated to the front of the property*

A key aspect of the brief was to bring in more light and create a better connection with the garden. The clients were also keen for the main living spaces to be separate from work and utility spaces.

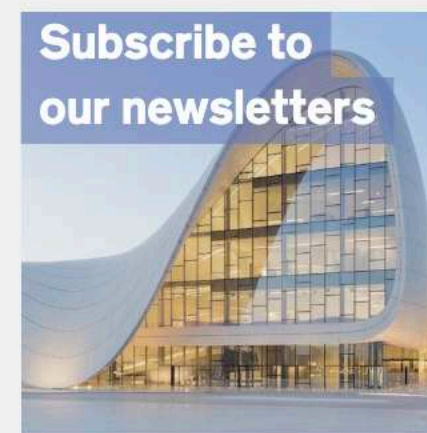
### Thomas Randall-Page completes rolling bridge at Cody Dock in London



### Emily Sandstrom builds Sydney home extension from recycled materials



### Subscribe



Email

Next

### Dezeen's top five houses of February 2023



### Low-lying house by Klop Architecture overlooks California's



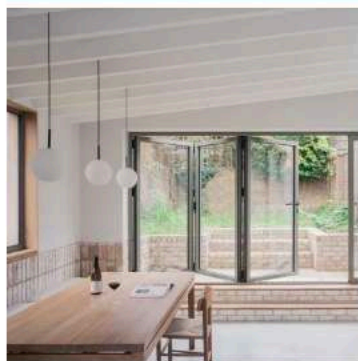
The new layout relocates the garage to the south of the property, closer to the entrance, freeing up space at the rear for an L-shaped extension that surrounds the swimming pool.



*The extension creates a large kitchen and dining room*

The new kitchen and dining space is located in the centre, set 60 centimetres lower than the main house, with sliding glass doors that lead out to the poolside terrace.

"Lowering the floor allowed us to increase ceiling heights and step the extension along with the natural, gentle slope of the site," said Ström Architects.



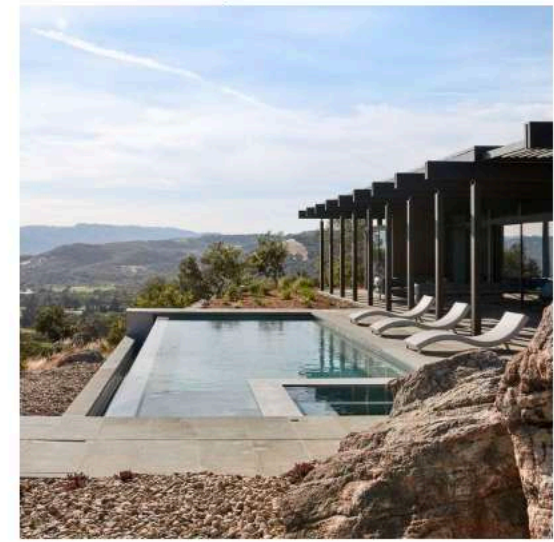
**Read:**  
**MarshKeene submerges London house extension to create single-level home**

New doorway openings on either side of a retained fireplace create a natural flow between the kitchen and a snug located behind.

Kitchen cabinets and appliances are all contained within a storage wall, for a clean aesthetic. One of these white doors also conceals the entrance to the corridor leading through to the new office, gym and sauna.

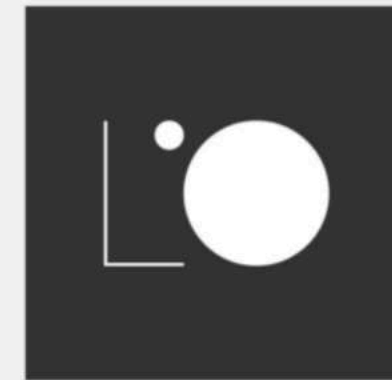


## Sonoma Valley



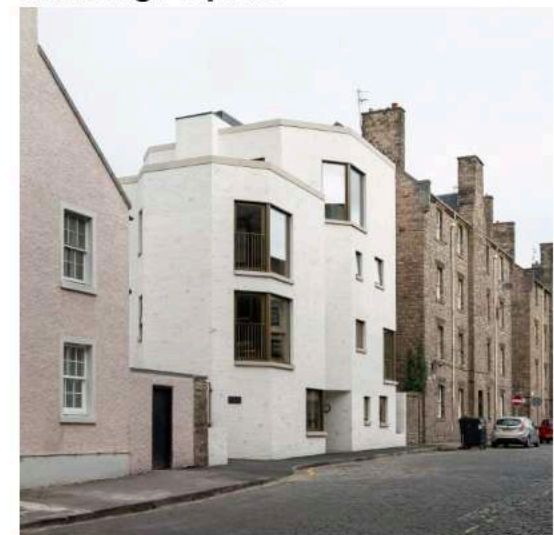
**Popular jobs**

**Featured jobs**

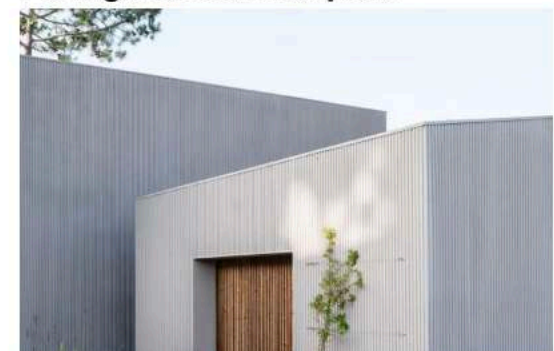


- 1 Senior lighting designer at L'Observatoire International
- 2 Project architect at Tigg Coll Architects
- 3 Junior architect at Laplace
- 4 Lighting designers at L'Observatoire International
- 5 Landscape architect at Prior + Partners

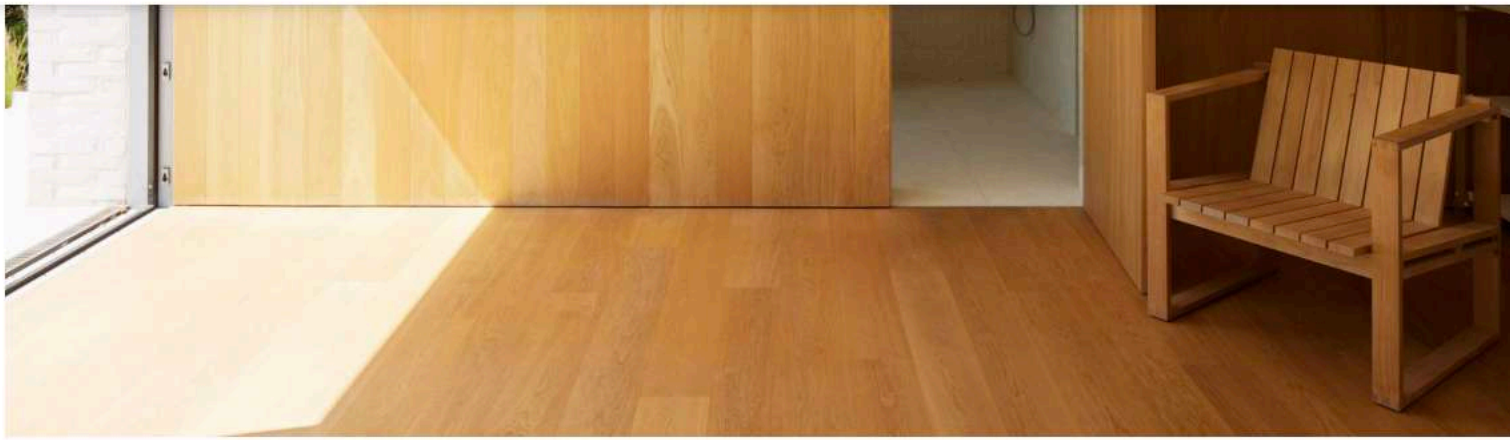
## Fraser/Livingstone adds angular timber tenement to historical Edinburgh square



## Atelier Data completes house in Portuguese national park







An oak-lined gym is also included

The interior design of The Pines echoes the pale, warm tones of the exterior with details including oak cabinetry and pale porcelain floor tiles.

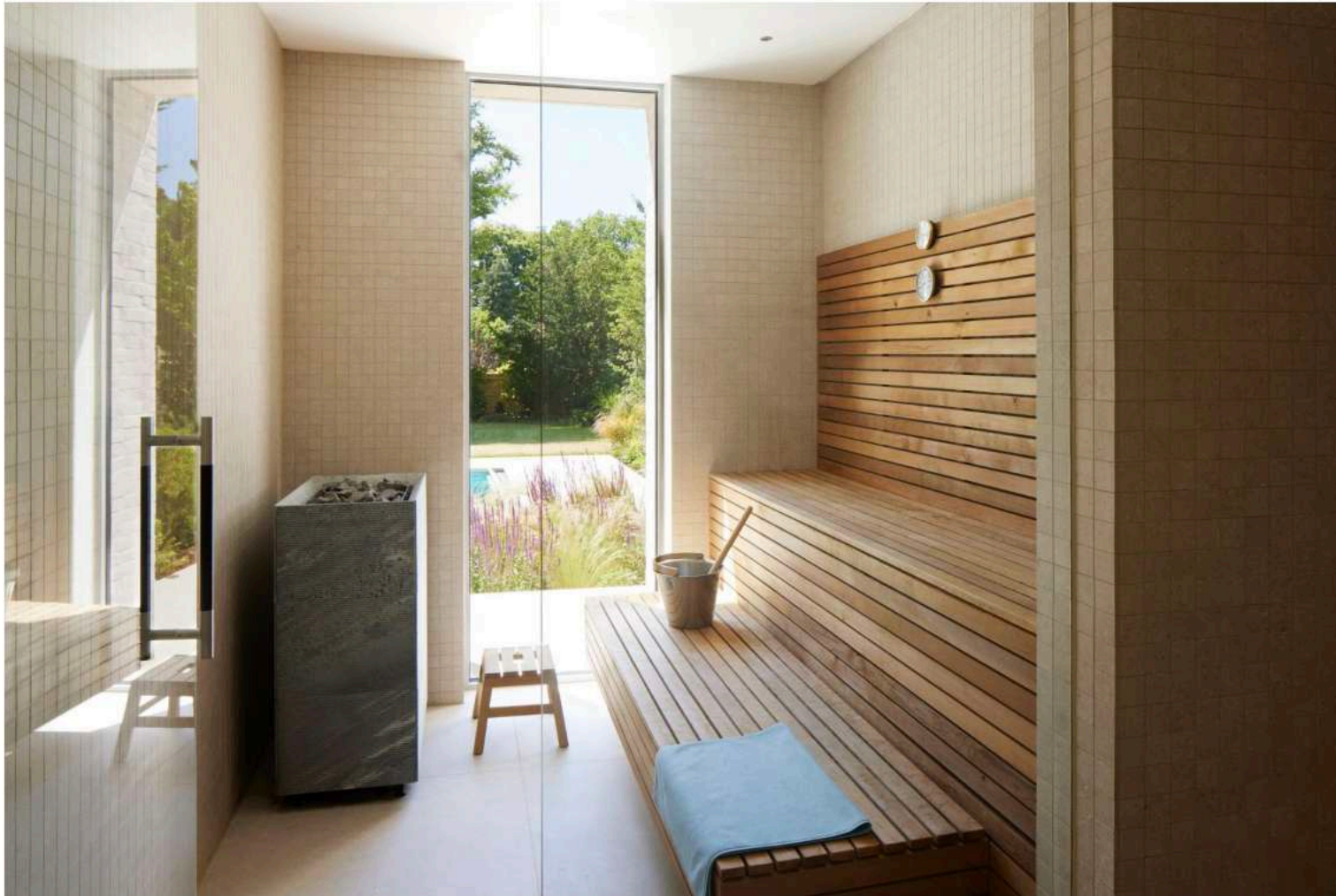
The result is highly minimalist, much like previous Ström Architects projects such as [Island Rest](#), a holiday home in the Isle of Wight, and [The Quest](#), a contemporary retirement home in Dorset.



### Dezeen Events Guide



### Dezeen Jobs



A sauna offers a view of the garden

"The remodelling completely changes the feel of the house and invites light into the spaces," added Ström.

"The garden, which was redesigned as part of the works, is now an integral part of the design."

*The photography is by Richard Chivers.*

Read more: [Architecture](#) | [UK](#) | [England](#) | [Extensions](#) | [Residential extensions](#) | [Ström Architects](#) | [Surrey](#) | [Residential](#) | [Highlights](#)

### Subscribe to our newsletters

Email\*

Next

### More images and plans

